

Perfis Normais

Catálogo Técnico



Fone/fax: (17) 2139-2100

Av. Jornalista Roberto Marinho, 1971, CEP-15061-500

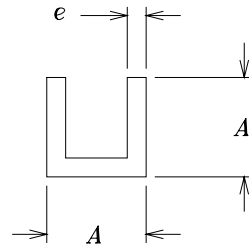
São José do Rio Preto - SP

alushop@alushop.com.br - <http://www.alushop.com.br>

Perfis Normais

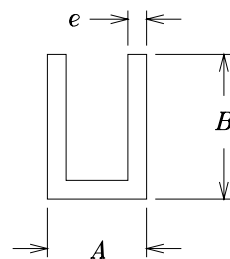
Perfis

PERFIL U DE ABAS IGUAIS



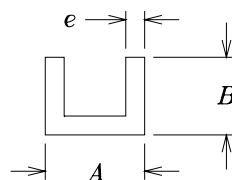
N. ALCOA	CODIGO ANTIGO	MILIMETROS		POLEGADAS		PESO (kg/m)
		A	e	A	e	
PU-001	U-036	9,53	1,59	3/8	-1/16	0,109
PU-002	U-044	12,70	1,59	1/2	1/16	0,150
PU-004	U-509	15,87	1,59	5/8	1/16	0,191

PERFIL U DE ABAS DESIGUAIS LONGAS



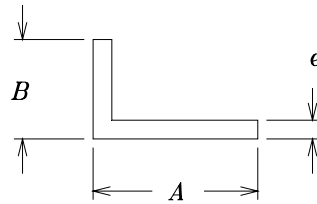
N. ALCOA	CODIGO ANTIGO	MILIMETROS			POLEGADAS			PESO (kg/m)
		A	B	e	A	B	e	
PU-303	U-037	9,52	12,70	1,58	3/8	1/2	1/16	0,136
PU-312		21,60	24,80	1,80	-	-	-	0,330
PU-639		29,00	35,00	1,50	-	-	-	0,390

PERFIL U DE ABAS DESIGUAIS CURTAS



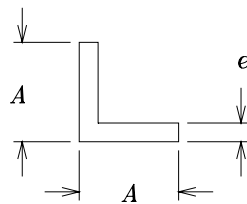
N. ALCOA	CODIGO ANTIGO	MILIMETROS			POLEGADAS			PESO (kg/m)
		A	B	e	A	B	e	
PU-207		19,05	12,70	1,98	3/4	1/2	-	0,217
PU-210		25,40	12,70	2,00	1	1/2	-	0,254

CANTONEIRAS DE ABAS DESIGUAIS



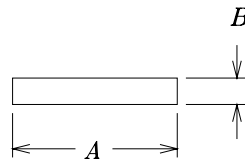
N. ALCOA	CODIGO ANTIGO	MILIMETROS			POLEGADAS			PESO (kg/m)
		A	B	e	A	B	e	
CT-204	L-093	25,40	12,70	3,18	1	1/2	1/8	0,301
CT-209		32,00	16,20	1,20	-	-	-	0,153
CT-218	L-668	50,80	31,75	2,00	2	1. 1/4	-	0,437

CANTONEIRAS DE ABAS IGUAIS



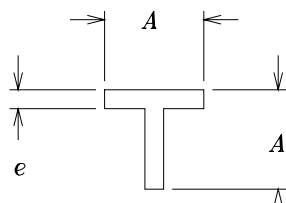
N. ALCOA	CODIGO ANTIGO	MILIMETROS		POLEGADAS		PESO (kg/m)
		A	e	A	e	
CT-001	L-002	12,70	1,59	1/2	1/16	0,102
CT-005	L-405	15,88	1,59	5/8	1/16	0,130
CT-007	L-009	19,05	1,59	3/4	1/16	0,157
CT-010	L-011	19,05	3,18	3/4	1/8	0,301
CT-013		25,00	1,20	-	-	0,159
CT-015	L-741	25,40	1,20	1	-	0,161
CT-016	L-013	25,40	1,59	1	1/16	0,210
CT-019	L-014	25,40	3,18	1	1/8	0,410
CT-022	L-018	31,75	3,18	1. 1/4	1/8	0,519
CT-023	L-019	31,75	4,76	1. 1/4	3/16	0,758
CT-047	L-744	38,10	1,57	1. 1/2	-	0,318
CT-026	L-022	38,10	3,17	1. 1/2	1/8	0,628
CT-027	L-023	38,10	4,76	1. 1/2	3/16	0,922
CT-031	L-612	50,80	2,00	2	-	0,540
CT-032	L-025	50,80	3,18	2	1/8	0,847
CT-033	L-026	50,80	4,76	2	3/16	1,250
CT-034		50,80	6,35	2	1/4	1,639

BARRA CHATA



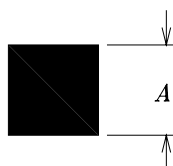
N. ALCOA	CODIGO ANTIGO	MILIMETROS		POLEGADAS		PESO (kg/m)
		A	B	A	B	
BC-002	BAR-012	12,70	3,17	1/2	1/8	0,109
BC-004		12,70	6,35	1/2	1/4	0,219
BC-008	BAR-013	15,87	3,18	5/8	1/8	0,137
BC-009	BAR-049	15,87	4,76	5/8	3/16	0,205
BC-010		15,87	6,35	5/8	1/4	0,273
BC-015	BAR-014	19,05	3,18	3/4	1/8	0,164
BC-016	BAR-050	19,05	4,76	3/4	3/16	0,246
BC-017	BAR-089	19,05	6,35	3/4	1/4	0,328
BC-021	BAR-015	22,22	3,18	7/8	1/8	0,191
BC-025	BAR-016	25,40	3,18	1	1/8	0,219
BC-026	BAR-053	25,40	4,76	1	3/16	0,328
BC-027	BAR-091	25,40	6,35	1	1/4	0,437
BC-037	BAR-054	31,75	4,76	1. 1/4	3/16	0,410
BC-044		32,00	16,00	–	–	1,388
BC-050	BAR-022	38,10	3,18	1. 1/2	1/8	0,328
BC-060	BAR-027	50,80	3,18	2	1/8	0,438
BC-066		51,00	32,00	–	–	4,423
BC-075		82,00	51,00	–	–	11,333
BC-503		25,40	6,35	1	1/4	0,414
BC-505		38,10	6,35	1 1/2	1/4	0,632

PERFIL T



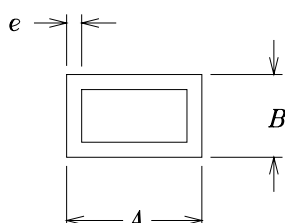
N. ALCOA	CODIGO ANTIGO	MILIMETROS		POLEGADAS		PESO (kg/m)
		A	e	A	e	
PT-004		19,05	1,58	3/4	1/16	0,156
PT-008	T-123	25,40	1,20	1	-	0,161
PT-009	T-076	25,40	1,58	1	1/16	0,211

VERGALHAO QUADRADO



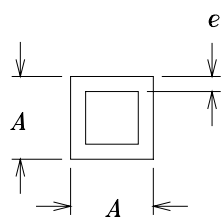
N. ALCOA	CODIGO ANTIGO	MILIMETROS	POLEGADAS	PESO (kg/m)
		A	A	
VQ-001	VER-4002	6,35	1/4	0,109
VQ-014		44,45	1 3/4	5,354

TUBO RETANGULAR



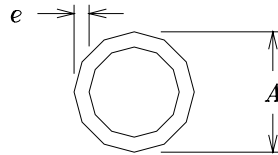
N. ALCOA	CODIGO ANTIGO	MILIMETROS			POLEGADAS			PESO (kg/m)
		A	B	e	A	B	e	
TG-074		25,40	12,70	1,30	1	1/2	-	0,250
TG-001	TUB-4501	25,40	12,70	1,58	1	1/2	1/16	0,299
TG-002	TUB-4509	30,00	20,00	2,00	-	-	-	0,499
TG-003	TUB-4545	38,10	25,40	2,00	1. 1/2	1	3/38	0,645
TG-004	TUB-4536	50,80	12,70	1,58	2	1/2	1/16	0,517
TG-073		50,80	25,40	1,00	2	1	-	0,402
TG-005	TUB-4560	50,80	25,40	1,50	2	1	-	0,595
TG-007	TUB-4504	50,80	25,40	2,00	2	1	-	0,783
TG-108		50,80	38,10	1,50	2	1. 1/2	1/17	0,698
TG-008	TUB-4513	50,80	38,10	1,98	2	1. 1/2	-	0,912
TG-026	TUB-4543	60,30	38,10	1,70	2. 3/8	1. 1/2	-	0,875
TG-013		76,20	25,40	2,00	3	1	-	1,058
TG-014	TUB-4517	76,20	38,10	1,98	3	1. 1/2	-	1,184
TG-018	TUB-4537	101,60	38,10	2,40	4	1. 1/2	-	1,755
TG-072		101,60	50,80	2,00	4	2	-	1,609
TG-019	TUB-4599	101,60	50,80	2,40	4	2	-	1,920
TG-020		101,60	50,80	2,80	4	2	-	2,228
TG-021		101,60	50,80	3,17	4	2	1/8	2,510
TG-024	TUB-4520	152,40	38,10	3,20	6	1. 1/2	1/8	3,193

TUBO QUADRADO



N. ALCOA	CODIGO ANTIGO	MILIMETROS		POLEGADAS		PESO (kg/m)
		A	e	A	e	
TQ-002		12,70	1,58	1/2	1/16	0,190
TQ-003		15,87	1,58	5/8	1/16	0,245
TQ-004		19,05	1,00	3/4	-	0,196
TQ-005		19,05	1,20	3/4	-	0,232
TQ-006		19,05	1,60	3/4	1/16	0,303
TQ-023		25,40	1,00	1	-	0,264
TQ-009		25,40	1,58	1	1/16	0,408
TQ-012		31,75	1,58	1. 1/4	1/16	0,517
TQ-013		38,10	1,20	1. 1/2	-	0,480
TQ-014	TUB-4014	38,10	1,58	1. 1/2	1/16	0,625
TQ-017	TUB-4020	50,80	1,98	2	-	1,048
TQ-019		70,00	2,80	-	-	2,040
TQ-034	TUB-4054	101,60	2,50	4	-	2,686
TQ-020		101,60	3,20	4	1/8	3,413

TUBO REDONDO



N. ALCOA	CODIGO ANTIGO	MILIMETROS		POLEGADAS		PESO (kg/m)
		A	e	A	e	
TR-002	TUB-003	9,53	1,59	3/8	1/16	0,107
TR-004	TUB-009	12,70	1,24	1/2	-	0,121
TR-005	TUB-010	12,70	1,59	1/2	1/16	0,150
TR-011		15,88	1,00	5/8	-	0,127
TR-012		15,88	1,20	5/8	-	0,150
TR-014	TUB-019	15,88	1,59	5/8	1/16	0,193
TR-250		15,88	3,18	5/8	1/8	0,343
TR-018		19,00	1,00	-	-	0,153
TR-019	TUB-027	19,05	1,20	3/4	-	0,182
TR-020	TUB-028	19,05	1,59	3/4	1/16	0,236
TR-035	TUB-038	22,23	1,59	7/8	1/16	0,279
TR-039	TUB-044	25,40	1,00	1	-	0,208
TR-040	TUB-046	25,40	1,59	1	1/16	0,322
TR-055	TUB-058	31,75	1,59	1. 1/4	1/16	0,408
TR-058	TUB-061	31,75	3,18	1. 1/4	1/8	0,772
TR-070		38,10	1,59	1. 1/2	1/16	0,493
TR-229		50,80	1,45	2	-	0,609
TR-098	TUB-610	50,80	1,59	2	-1/16	0,665
TR-099	TUB-091	50,80	2,00	2	-	0,831
TR-135	TUB-636	76,70	2,00	-	-	1,263
TR-160		101,60	1,50	4	-	1,278
TR-161	TUB-278	101,60	1,65	4	-	1,404
TR-162		101,60	2,60	4	-	2,191

VERGALHAO REDONDO



N. ALCOA	CODIGO ANTIGO	MILIMETROS	POLEGADAS	PESO
		A	A	(kg/m)
VR-002		6,35	1/4	0,086
VR-050	VER-003	7,00	-	0,104